

CASE STYLES

OUTLINE DIMENSIONS (inch/mm)

case no.	A	B	C	D	E	F	G	H	J	K	L	M	N	P	Q	R	S	T	wt. grams.	NOTES*
AAA118	1.50 38.10	.50 12.70	.935 23.75	.040 1.02	1.100 27.94	.19 4.83	.400 10.16	.15 3.81	.600 15.24	.300 7.62	.20 5.08	.14 3.56							19	A1, E1, B7
BBB123	.145 3.69	.100 2.54	.04 1.02	.006 .15	.030 .76	.488 12.40													.015	A13, C5, E2
CCC127	2.25 57.15	1.38 35.05	1.24 31.50	.50 12.70	.150 3.81	3.100 78.74	.138 3.51	1.238 31.45	3.25 82.55	.12 3.05	.80 20.32	.69 17.53	1.60 40.64	.60 15.24	1.200 30.48	.52 13.21	.82 20.83	.150 3.81	80.0	A6, A11, A18, D17
DDD131	7.00 177.80	3.25 82.55	3.13 79.50	.25 6.35	6.500 165.10	.38 9.65	2.500 63.50	.156 3.96	.88 22.35	.43 10.92	.62 15.75	1.00 25.40	2.63 66.68	.125 3.18	.50 12.70	6.00 152.40	2.23 56.64	8.35 212.09	1884.0	A7, A18, D6
DDD338	7.00 177.80	3.25 82.55	3.13 79.50	.25 6.35	6.500 165.10	.38 9.65	2.500 63.50	.156 3.96	.88 22.35	.73 18.54	.62 15.75	1.13 28.70	2.23 56.64	.125 3.18	.50 12.70	6.00 152.40	2.23 56.64	8.35 212.09	1884.0	A7, A18, D6
EEE132	.90 22.86	.90 22.86	.675 17.15	.245 6.22	.45 11.43	1.34 34.04	.09 2.29	1.152 29.26	.09 2.29	.712 18.08	.22 5.59	.106 2.69	.05 1.27						50.0	A4, A18, D6
FFF122	.83 21.08	.83 21.08	.18 4.57	.10 2.54	.100 2.54	.600 15.24	.95 24.13	.017 .43	.15 3.81										5.0	A15, E1
GGG126	2.25 57.15	1.38 35.05	1.24 31.50	.50 12.70	.150 3.81	3.100 78.74	.138 3.51	1.238 31.45	3.25 82.55	.12 3.05	.80 20.32	.69 17.53	—	.60 15.24	1.200 30.48	.52 13.21	.82 20.83	.150 3.81	80.0	A6, A11, A18, D17
HHH141	2.00 50.80	2.00 50.80	.95 24.13	1.062 26.98	0.125 3.18	1.75 44.45	.125 3.18	0.575 14.60	1.00 25.40	1.35 34.29									200.0	A10, C1, D6
JJJ142	1.25 31.75	1.25 31.75	.75 19.05	.63 16.00	.38 9.65	.32 8.13	—	.80 20.32	.80 20.32										70.0	A10, D17
JJJ245	.75 19.05	1.00 25.40	.58 14.73	.38 9.65	.29 7.37	.35 8.89													22.0	A4, B9, D6
KKK155	.32 8.13	.445 11.30	.090 2.29	.006 .152	.012 .30	.070 1.78	.050 1.270	.010 .254	.015 .38	.030 .762	.050 1.270	.050 1.270							.40	A13, F7
MMM168	.045 1.14	.055 1.40	.105 2.67	.120 3.05	.047 1.19	.005 0.13	.083 2.11	.104 2.64	.070 1.78	.080 2.03	.018 0.46	.024 0.61	.030 0.76	.036 0.91	.015 0.38	.021 0.53	.023 0.58	.004 0.10	1.0	A13, F8

tolerance .x±.1 .xx±.03 .xxx±.015 inch

oz. = grams x.0353

* NOTES:

- A. MATERIAL AND FINISH
 - A1. Header material C.R.S. Pin material: #52 alloy. Finish: electro tin, hot oil flowed. Cover material: cupro-nickel.
 - A4. Case material: aluminum alloy. Finish: irridite per MIL-C-5541.
 - A6. Case material: aluminum alloy. Finish: blue paint over irridite.
 - A7. Case material: aluminum alloy. Finish: case black paint. Heat sink: black anodize. Baseplate irridite per MIL-C-5541.
 - A10. Case material: aluminum alloy. Finish: grey paint or yellow irridite.
 - A11. Case material: aluminum alloy. Finish: blue anodized.
 - A13. Case material: plastic. Lead finish: tin-lead plate.
 - A15. Case material: kovar. Lead material: kovar. Finish: gold plate per MIL-G-45204.
 - A18. Mounting bracket finish: irridite or clear anodize.
- B. MOUNTING
 - B7. Pin's meniscus (of header) 0.015" max.
 - B9. No mounting holes.
- C. MARKING
 - C1. For port markings 1, 2, and 3 see specification data sheet.
 - C5. RF output is identified by index mark, model dash number by alphanumeric code.
- D. CONNECTORS
 - D6. Connectors: Female SMA only. Male SMA available on request, consult factory.
 - D17. Connectors: Female SMA only.
- E. SPECIAL TOLERANCES
 - E1. Pin diameter ±.005 inch.
 - E2. Lead width ±.010; lead thickness ±.005 inch
- F. PACKAGING
 - F1-29. Tape and reel packaging available. See Tape and Reel Packaging Information for details.
 - To order Tape & Reel version add -TR suffix to model.



Distribution Centers NORTH AMERICA 800-654-7949 • 417 335-5935 • Fax 417-335-5945 • EUROPE 44-1252-832600 • Fax 44-1252-837010

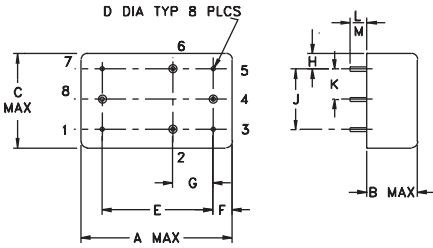
INTERNET <http://www.minicircuits.com>

ISO 9001 CERTIFIED

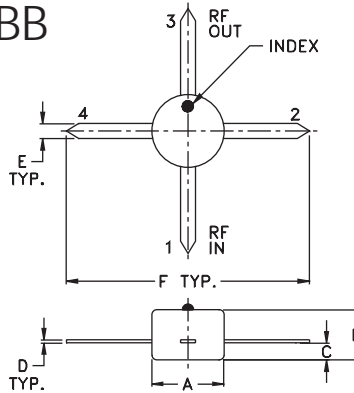
001204

OUTLINE DRAWINGS

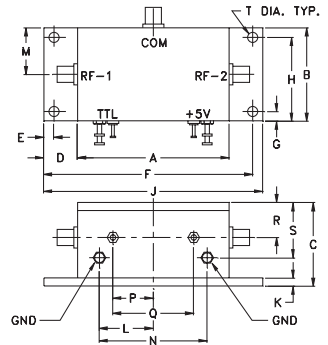
AAA



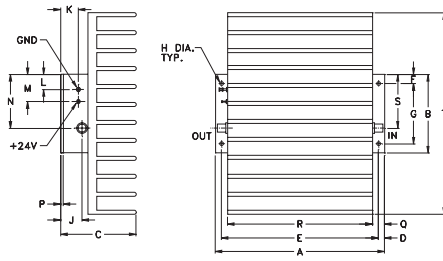
BBB



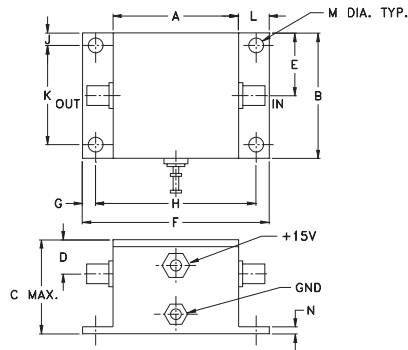
CCC



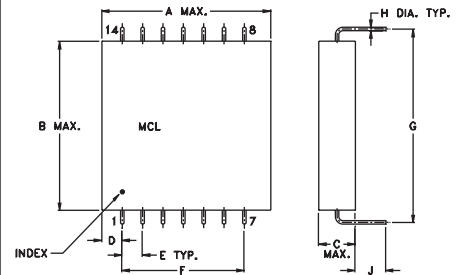
DDD



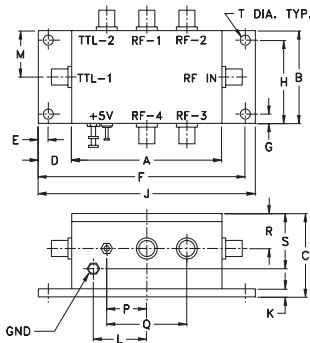
EEE



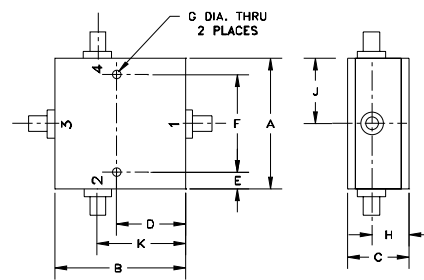
FFF



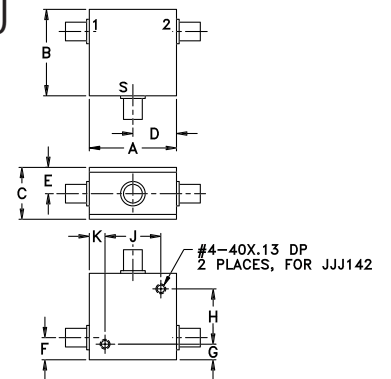
GGG



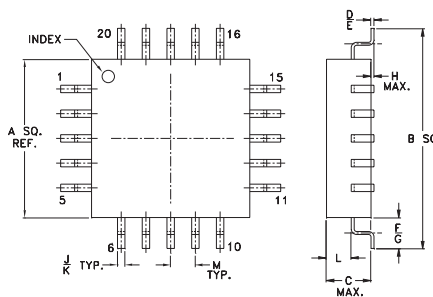
HHH



JJJ



KKK



MMM

